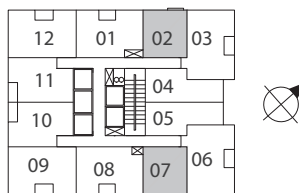
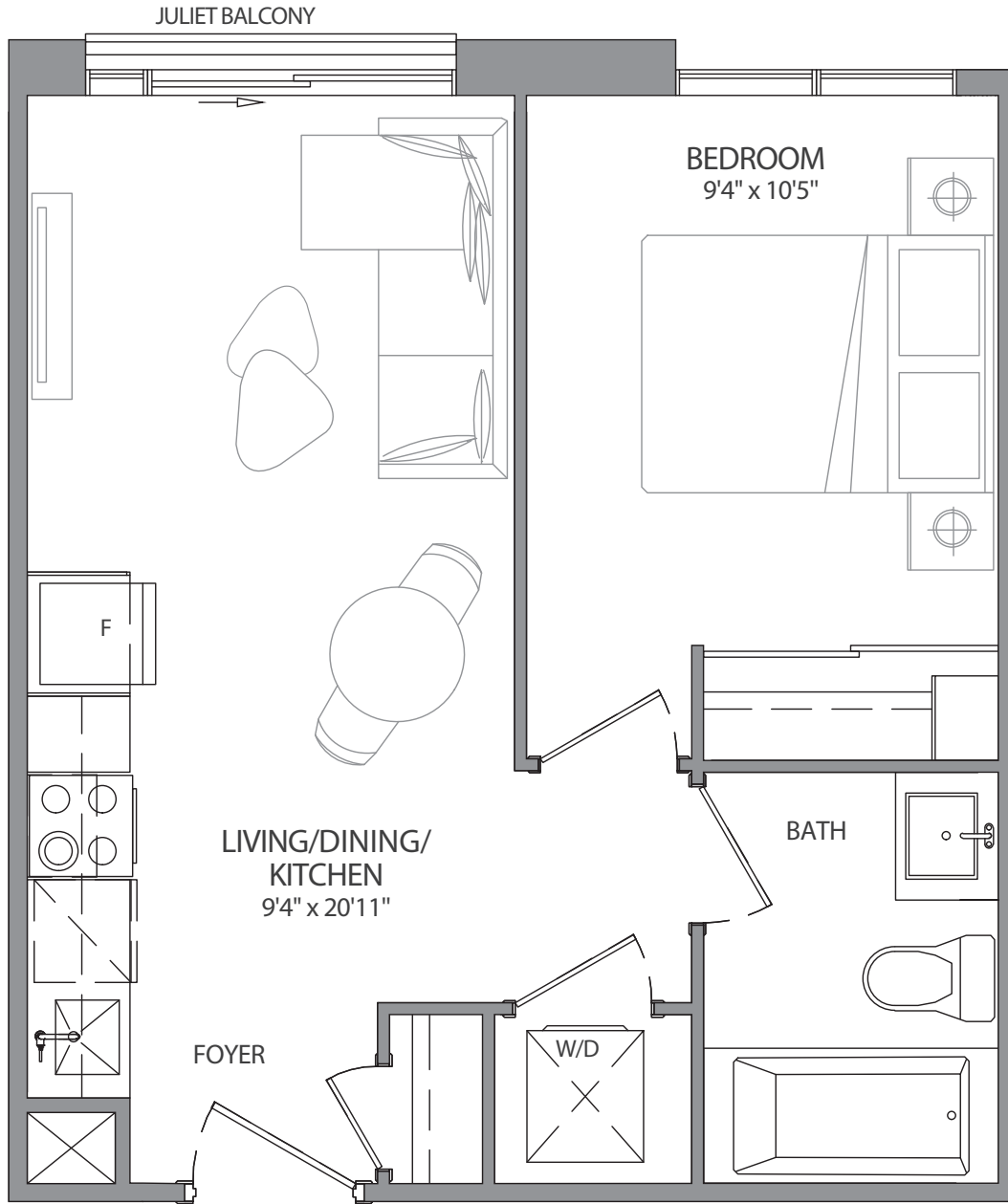




**BRISTOL PLACE**  
BRAMPTON

# SUITE 1A - 445 SQ FT

1 BEDROOM | 1 BATH



6 - 38TH FLOOR

All areas and stated room dimensions are approximate. Floor area measured in accordance with Tarion requirements. Actual living area will vary from floor area stated. Furniture not included. Plan may be reversed. All illustrations are artist's concept. E. & O.E. September 2023

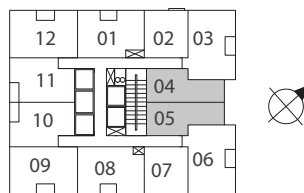
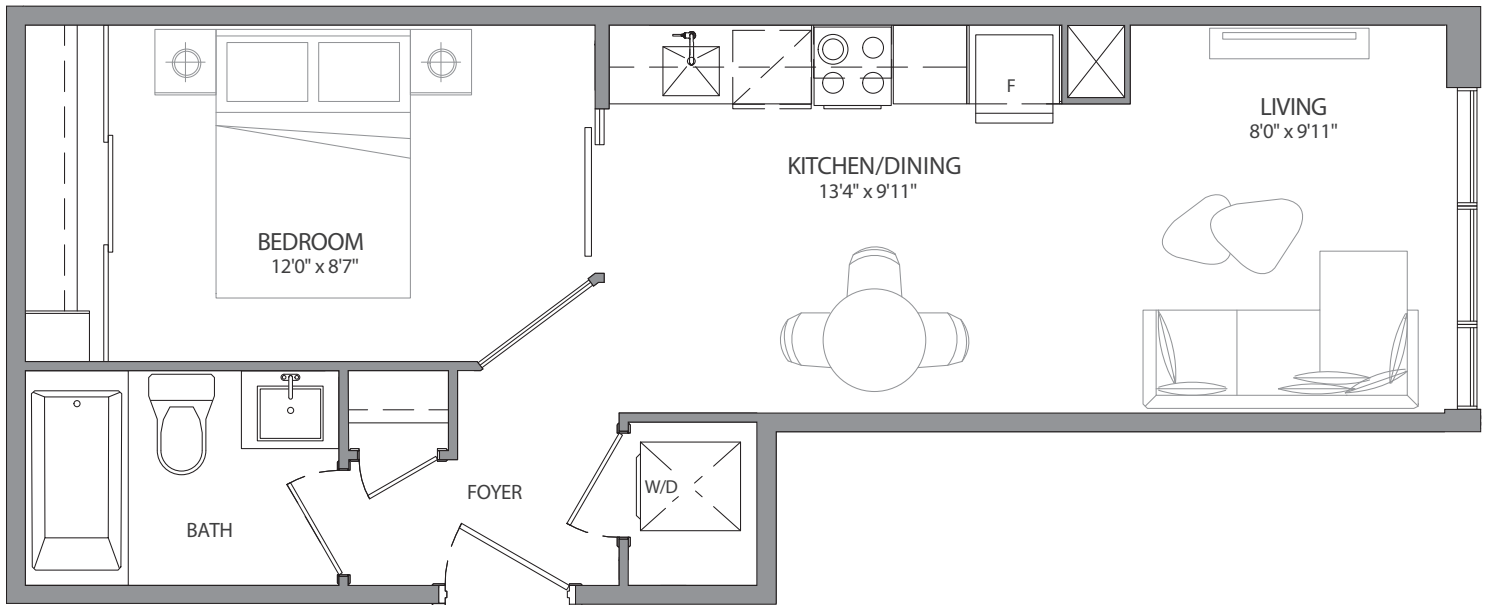




**BRISTOL PLACE**  
BRAMPTON

# SUITE 1B - 501 SQ FT

1 BEDROOM | 1 BATH



6 - 38TH FLOOR

All areas and stated room dimensions are approximate. Floor area measured in accordance with Tarion requirements. Actual living area will vary from floor area stated. Furniture not included. Plan may be reversed. All illustrations are artist's concept. E. & O.E. September 2023

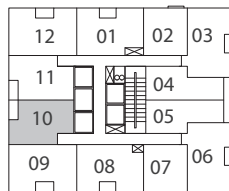
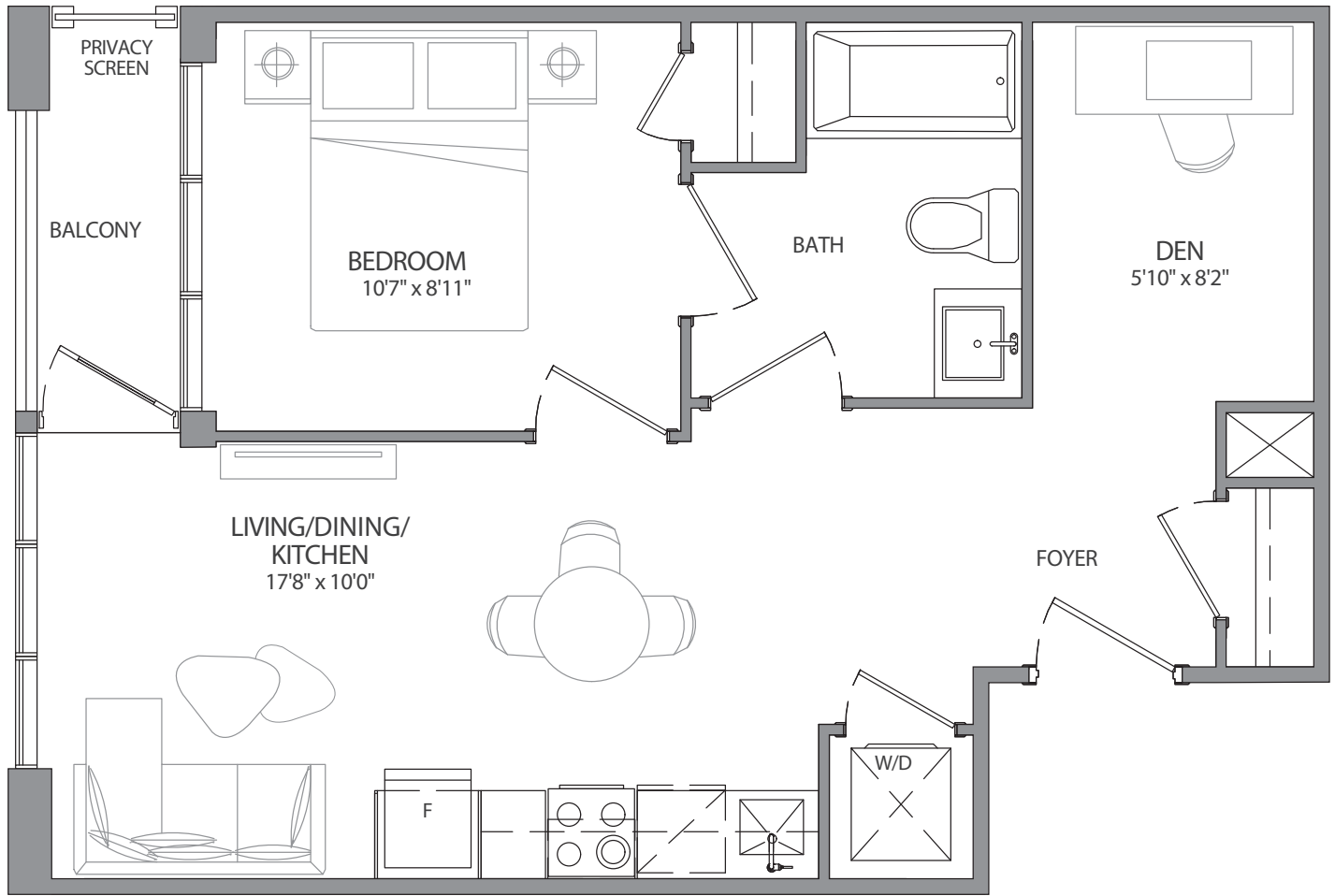




**BRISTOL PLACE**  
BRAMPTON

# SUITE 1C+D - 550 SQ FT

44 SQ. FT. BALCONY | TOTAL LIVING SPACE 594 SQ. FT.  
1 BEDROOM + DEN | 1 BATH



6 - 38TH FLOOR

All areas and stated room dimensions are approximate. Floor area measured in accordance with Tarion requirements. Actual living area will vary from floor area stated. Furniture not included. Plan may be reversed. All illustrations are artist's concept. E. & O.E. September 2023

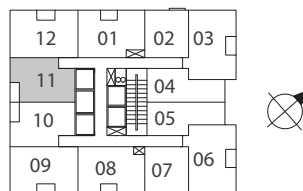
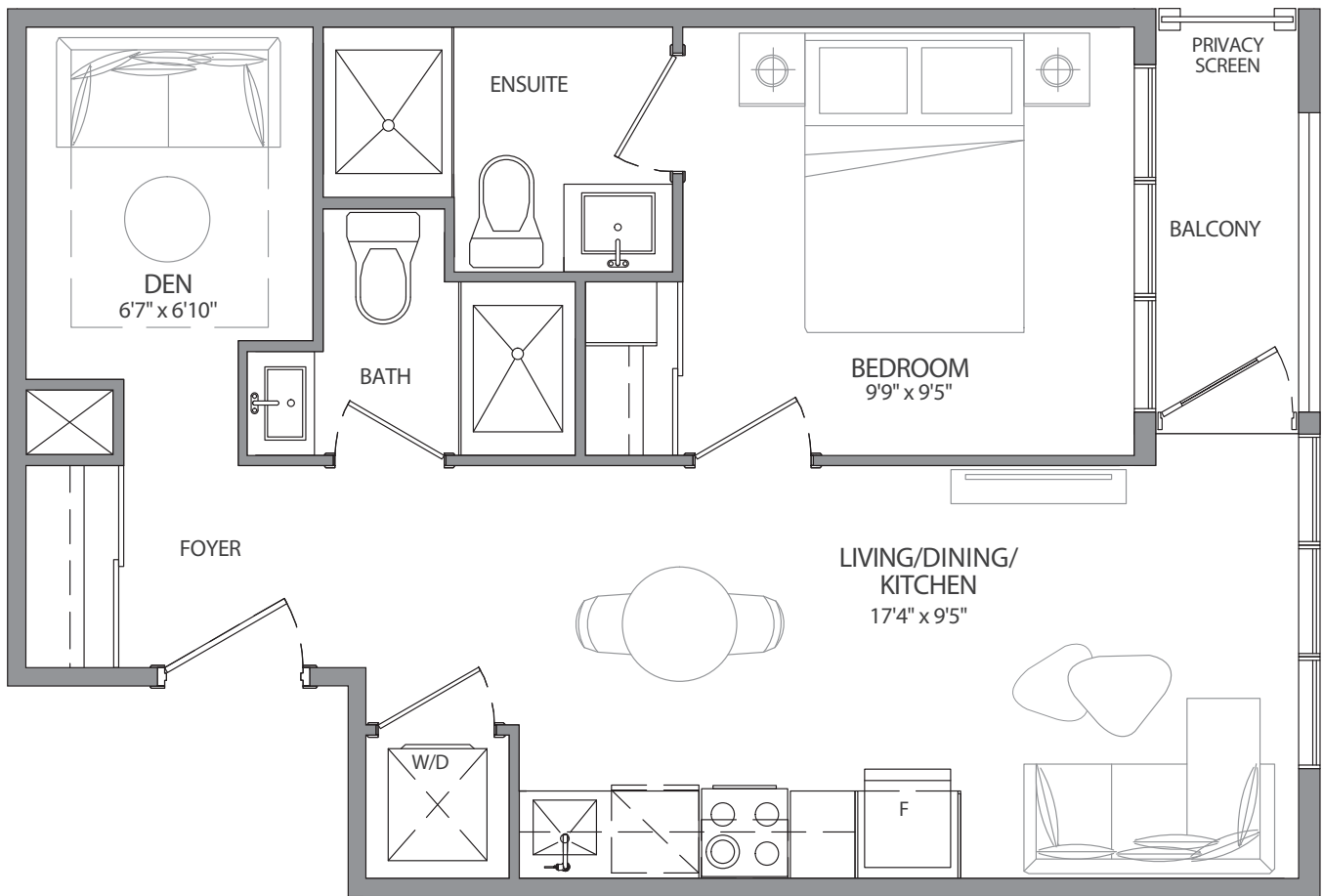




**BRISTOL PLACE**  
BRAMPTON

# SUITE 1D+D - 550 SQ FT

44 SQ. FT. BALCONY | TOTAL LIVING SPACE 594 SQ. FT.  
1 BEDROOM + DEN | 2 BATH



6 - 38TH FLOOR

All areas and stated room dimensions are approximate. Floor area measured in accordance with Tarion requirements. Actual living area will vary from floor area stated. Furniture not included. Plan may be reversed. All illustrations are artist's concept. E. & O.E. September 2023

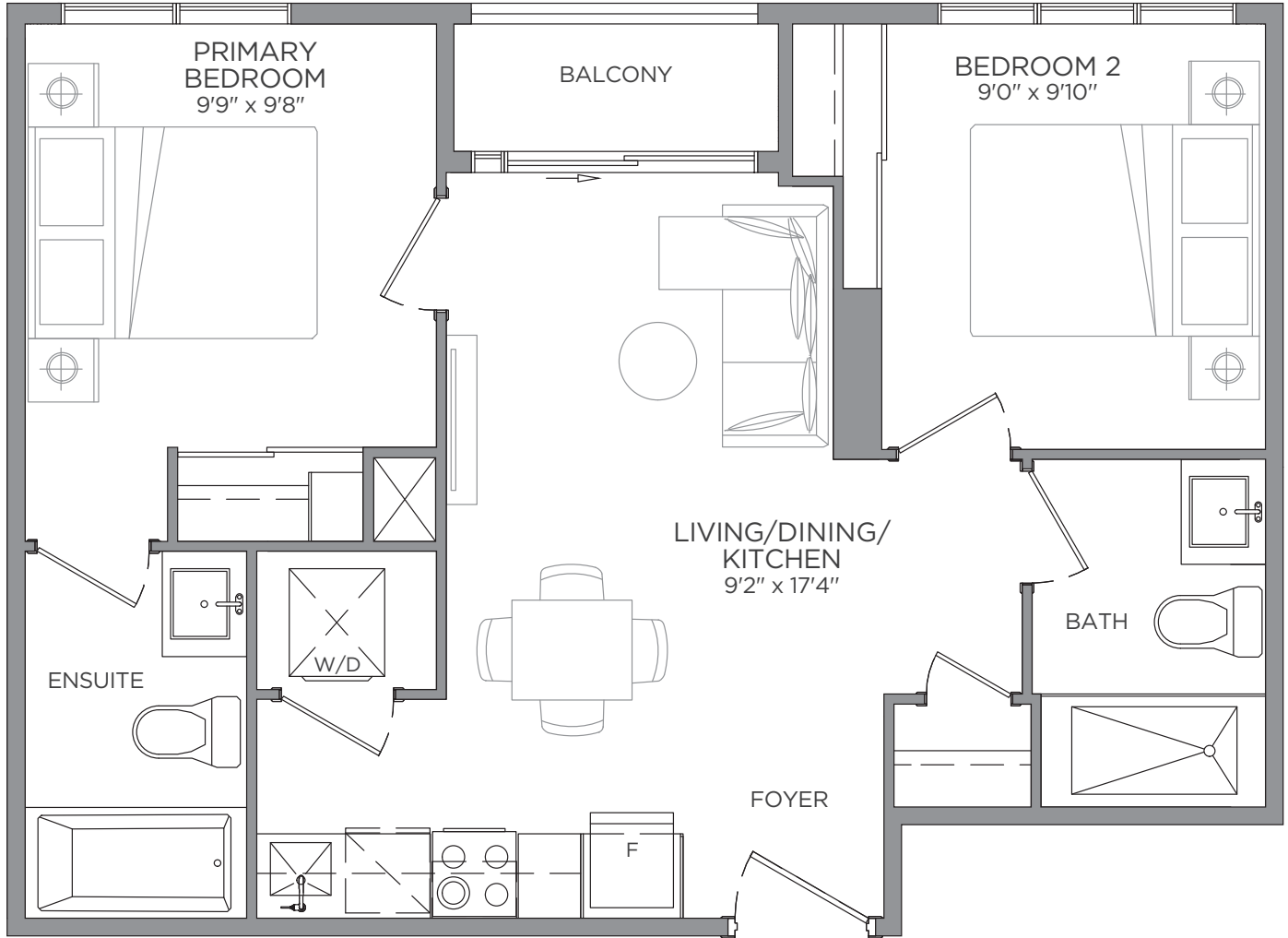




**BRISTOL PLACE**  
BRAMPTON

# SUITE 2A - 632 SQ FT

22 SQ. FT. BALCONY | TOTAL LIVING SPACE 654 SQ. FT.  
2 BEDROOM | 2 BATH



6 - 38TH FLOOR

All areas and stated room dimensions are approximate. Floor area measured in accordance with Tarion requirements. Actual living area will vary from floor area stated. Furniture not included. Plan may be reversed. All illustrations are artist's concept. E. & O.E. September 2023

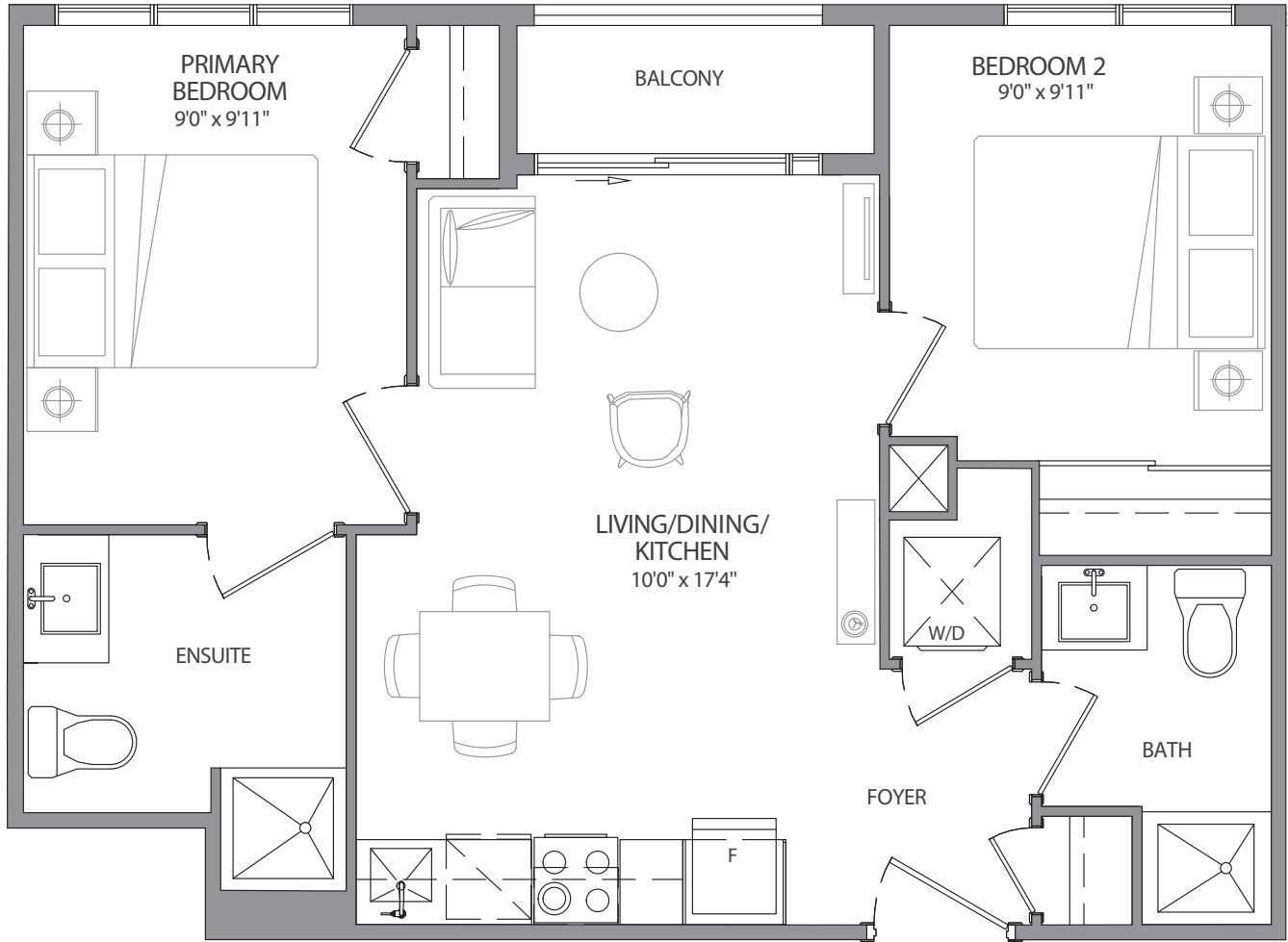




**BRISTOL PLACE**  
BRAMPTON

# SUITE 2B - 641 SQ FT

22 SQ. FT. BALCONY | TOTAL LIVING SPACE 663 SQ. FT.  
2 BEDROOM | 2 BATH



6 - 38TH FLOOR

All areas and stated room dimensions are approximate. Floor area measured in accordance with Tarion requirements. Actual living area will vary from floor area stated. Furniture not included. Plan may be reversed. All illustrations are artist's concept. E. & O.E. September 2023

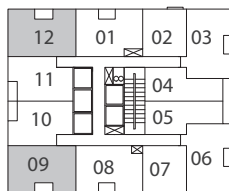
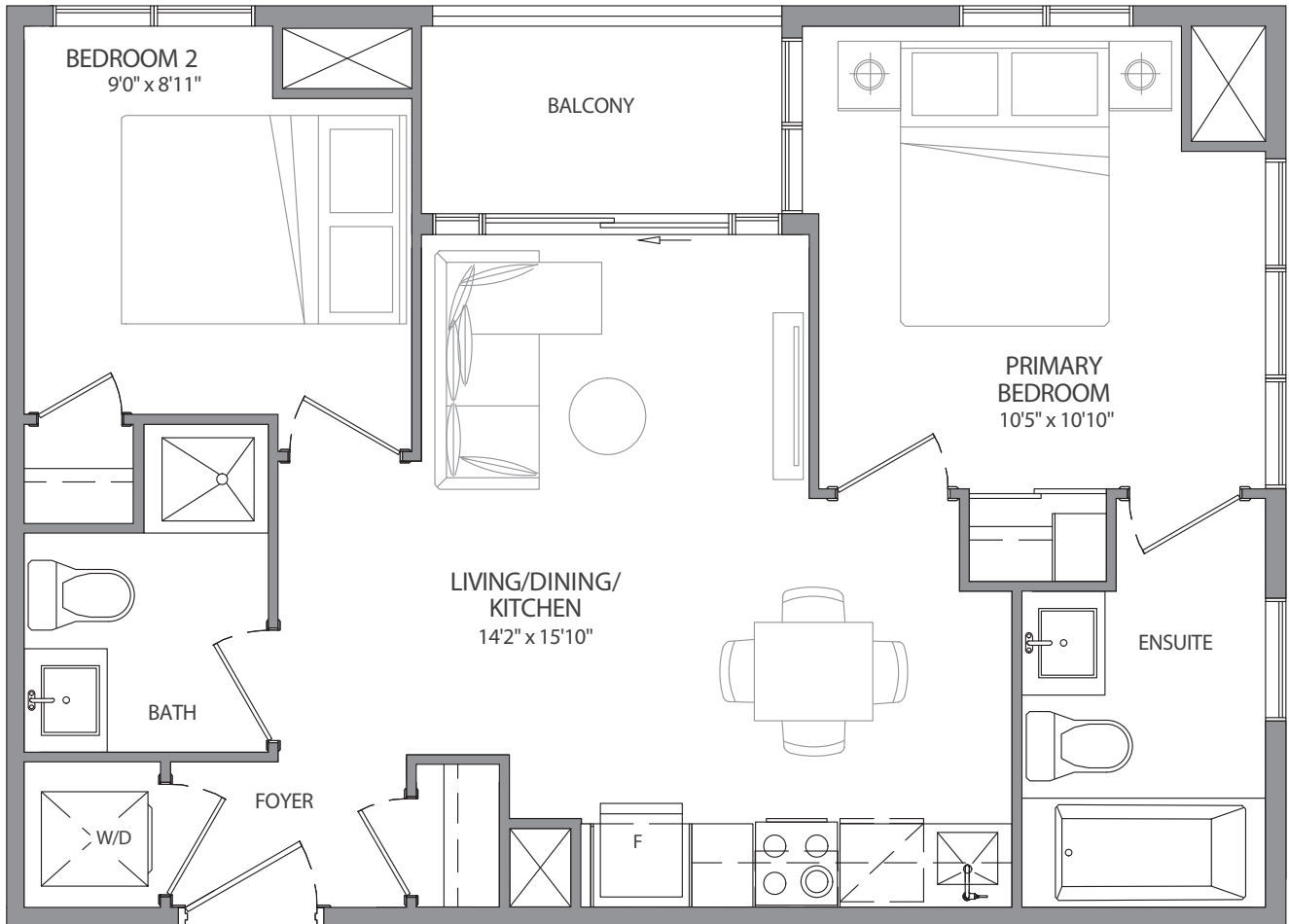




**BRISTOL PLACE**  
BRAMPTON

# SUITE 2C - 646 SQ FT

40 SQ. FT. BALCONY | TOTAL LIVING SPACE 686 SQ. FT.  
2 BEDROOM | 2 BATH



6 - 38TH FLOOR

All areas and stated room dimensions are approximate. Floor area measured in accordance with Tarion requirements. Actual living area will vary from floor area stated. Furniture not included. Plan may be reversed. All illustrations are artist's concept. E. & O.E. September 2023

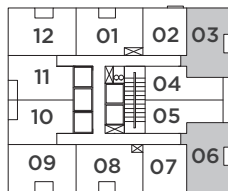
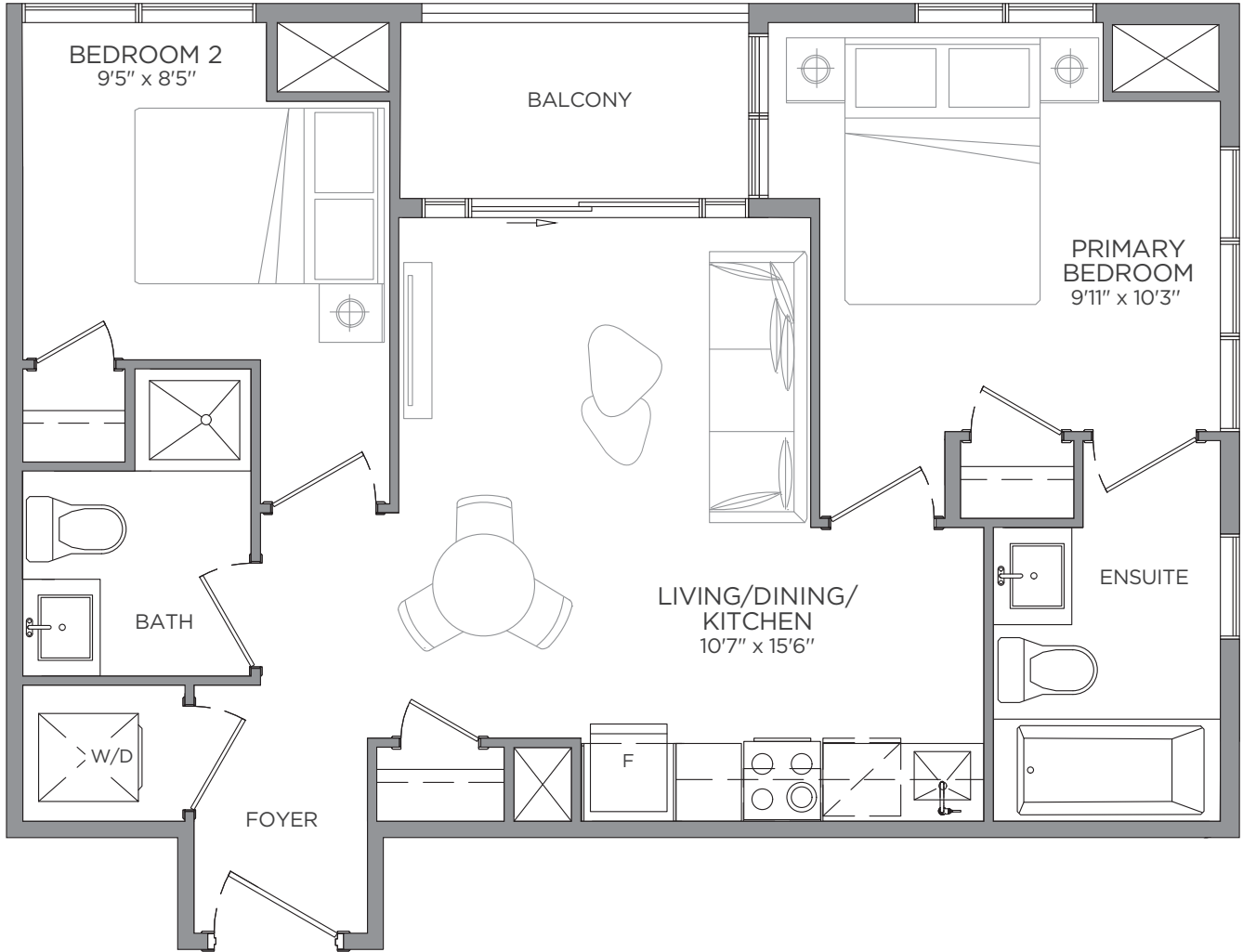




**BRISTOL PLACE**  
BRAMPTON

# SUITE 2D - 657 SQ FT

40 SQ. FT. BALCONY | TOTAL LIVING SPACE 697 SQ. FT.  
2 BEDROOM | 2 BATH



6 - 38TH FLOOR

All areas and stated room dimensions are approximate. Floor area measured in accordance with Tarion requirements. Actual living area will vary from floor area stated. Furniture not included. Plan may be reversed. All illustrations are artist's concept. E. & O.E. September 2023

